

File Number **22/36404875**



TEST REPORT

FCC/ICES Test Report

Petitioner's Reference: LIBELIUM

Customer Address : Avenida María Zambrano, 31. Edificio WTC
Torre Este Planta 7
50018, Zaragoza

Received material: AIR QUALITY STATION

Brand:	Air Quality Station	Model:	Air Quality Station
S/N:	AQS20363639533150150040001C	Applus Id:	9104-00001

Result: complies

It has been tested and complies the standard specifications Applicable / s.
See specifications applied on page 8.

Applicable Standards

Emission standard/s: **FCC 47 CFR Part 15 Subpart B (October 2021)¹**
¹The latest modifications of the standard, published at the date of the tests reported in this document, have been considered

ICES-003 Issue 7 – 2020 (updated October 2020)

Date of issue: Bellaterra, November 8, 2022

EMC & Wireless Technical Manager
Electrical and Electronics
LGAI Technological Center S.A.

The results refer only and exclusively to the sample, product or material delivered for testing in "Received Material" section below. The equipment has been tested under conditions stipulated by standard(s) quoted in this document.
This document will not be reproduced otherwise than in full.
This is the first page of the document, which consists of 25 pages.

INDEX

1. EQUIPMENT RECEIVED AND TESTED	3
1.1. TEST CONFIGURATION	3
1.2. AUXILIARY AND CONTROL EQUIPMENT	3
1.3. INPUT/OUTPUT WIRES.....	3
1.4. MODIFICATION PERFORMED	4
2. APPLICABLE STANDARDS	5
2.1. TEST APPLICABLE STANDARDS	5
2.1.1. Acceptance criteria for the test	5
2.1.2. Test facilities ID	5
2.1.3. Competences and Guarantees	5
2.1.4. Measuring uncertainties	6
2.2. USED EQUIPMENT	7
2.3. ENVIRONMENTAL CONDITIONS	7
3. RESULT	8
4. ANNEXES	9
4.1 TEST RESULTS.....	9
4.1.1 Radio-frequency radiated emissions	9
4.1.2 Power Line Conducted Emissions	17
4.2. TEST SETUP CONFIGURATION	24
4.3. IDENTIFICATION PICTURES.....	25

1. EQUIPMENT RECEIVED AND TESTED

EQUIPMENT SPECIFICATIONS:

Brand:	Air Quality Station	Model:	Air Quality Station
S/N:	AQS20363639533150150040001C	Power Supply Range:	100-240 VAC, 50/60 Hz 0.35 A
SW Version:	v2.0	HW Version:	v1.1
Maximum internal frequency:	2700 MHz	FW version:	v2.0

Product description:

(Information declared by the manufacturer, Applus + is not responsible)

The Air Quality Station solution developed by Libelium allows monitoring the Air Quality Index (AQI).

RF FEATURES:

Radio chipset: EG25-G , Brand: Quectel
Antenna: Pulse antenna W6113

Test product reception:	2022-08-16
Test initial date:	2022-08-16
Test final date:	2022-08-18

1.1. Test configuration

Power Supply:	220V _{AC} 60 Hz
Set-up:	Tabletop For emission tests, the DUT supplied at 220 V _{AC} 60 Hz and all functions are operated at the same time. The worst LTE band shall be detected and used in the rest of tests:
Test exercise:	The LTE test simulator CMW500 is communicating with the EUT that operates in TX/RX mode. Operational Mode: LTE Band 3 (downlink 1842.5 MHz / uplink 1747.5 MHz) due to is the "worst case" detected of the radiated emission test checking the different configurations.
Equipment size:	271 mm x 170 mm x 120 mm

1.2. Auxiliary and control equipment

- CMW500 base station simulator provided by Applus.

1.3. Input/output wires

- Power supply wire shorter than 3 m.

1.4. Modification performed

No modifications were performed.

2. APPLICABLE STANDARDS

2.1. TEST APPLICABLE STANDARDS

Standard: ANSI C63.4:2014 and ICES-003 issue 7
Basic standard: ANSI C63.4:2014
<input checked="" type="checkbox"/> Radio-frequency radiated emissions (30 MHz – 13.5 GHz) ¹ : FCC Part 15.109, ICES-003 Issue 7(3.2.2) ¹ Upper limit according to the fifth harmonic of the maximum internal frequency declared by the manufacturer or to 40 GHz, whichever is lower.
Basic standard: ANSI C63.4:2014
<input checked="" type="checkbox"/> Power line conducted emissions (150 kHz – 30 MHz): FCC Part 15.107, ICES-003 Issue 7(3.2.1)
Note: Test applicable to standard AC/DC power supply

2.1.1. Acceptance criteria for the test

According to standard **FCC 47 CFR Part 15 Subpart B and ICES-003 Issue 7**

2.1.2. Test facilities ID

FCC Test Firm Registration Number:	507478
ISED Assigned Code:	5766A

2.1.3. Competences and Guarantees

LGAI Technological Center, S.A. is a testing laboratory accredited by the National Accreditation Body (ENAC -Entidad Nacional de Acreditación), to perform the tests indicated in the Certificate No. 9/LE894. In order to assure the traceability to other national and international laboratories, Applus+ Laboratories has a calibration and maintenance program for its measurement equipment.

Applus+ Laboratories guarantees the reliability of the data presented in this report, which is the result of the measurements and the tests performed to the item under test on the date and under the conditions stated on the report and, it is based on the knowledge and technical facilities available at Applus+ Laboratories at the time of performance of the test.

Applus+ Laboratories is liable to the client for the maintenance of the confidentiality of all information related to the item under test and the results of the test. The results presented in this Test Report apply only to the particular item under test established in this document.

IMPORTANT: No parts of this report may be reproduced or quoted out of context, in any form or by any means, except in full, without the previous written permission of Applus+ Laboratories.

General conditions:

1. This report is only referred to the item that has undergone the test.
2. This report does not constitute or imply on its own an approval of the product by the Certification Bodies or competent Authorities.
3. This document is only valid if complete; no partial reproduction can be made without previous written permission of Applus+ Laboratories.
4. This test report cannot be used partially or in full for publicity and/or promotional purposes without previous written permission of Applus+ Laboratories and the Accreditation Bodies.

2.1.4. Measuring uncertainties

Radio-frequency radiated emissions:	± 4.3 dB
Radio-frequency conducted emissions:	± 2.1 dB

Expanded uncertainty measurement is obtained multiplying the typical uncertainty measurement with a coverage factor $k=2$, which corresponds to a confidence level of 95% for a normal distribution.

2.2. Used Equipment

RADIO-FREQUENCY RADIATED EMISSIONS (SAC2)					
EQUIPMENT	BRAND	MODEL	NUMBER	LAST CALIBRATION	NEXT CALIBRATION
EMI RECEIVER	R&S	ESW 26	1041791	21/01/2022	21/01/2023
BILOG ANTENNA	SCHAWARZBECK	VULB 9162	1042229	11/01/2022	11/01/2023
HORN ANTENNA	EMCO	3115	05-ER-182	04/11/2021	04/11/2022
ATENUADOR 3 DB	HUBER/SUHNER	6803.17.B	1042020	01/08/2022	01/08/2023
RF PREAMPLIFIER	BONN ELEKTRONIK	BLMA 0118-M	1041733	16/03/2022	16/03/2023
CABLE	HUBER/SUHNER	SF103/11N/16N/400 OMM	1041909	01/02/2022	01/02/2023
RF CABLE (WALL PANEL)	--	--	104572	23/08/2021	23/08/2022
SEMIANECHOIC CHAMBER SAC2	EUROSHIELD	TC2	104563	17/09/2021	17/09/2022
TEST SOFTWARE	ROHDE & SCHWARZ	EMC32 v.10.50.00	104624	--	--
AUTOMATIC ANTENNA MAST	MATURO		1042591		
MAST-TABLE CONTROLLER	MATURO		1042590	--	--

POWER LINE CONDUCTED EMISSIONS					
EQUIPMENT	BRAND	MODEL	NUMBER	LAST CALIBRATION	NEXT CALIBRATION
EMI RECEIVER	R&S	ESCS 30	104952	18/11/2021	18/11/2022
LISN	R&S	ESH3-Z5	05-ER-236	02/11/2021	02/11/2022
SHIELDED ROOM	ALBATROSS	SR-2	1042269		
TEST SOFTWARE	ROHDE & SCHWARZ	EMC32 v.10.50.00	104624	--	--
TRANSIENT LIMITER	R&S	ESH3.Z2	1041267	11/05/2022	11/05/2023

AUXILIARY EQUIPMENT					
EQUIPMENT	BRAND	MODEL	NUMBER	LAST CALIBRATION	NEXT CALIBRATION
THERMOHIGROMETER	PCE	THB 40	1042022	04/10/2021	04/10/2022
WIDEBAND RADIO COMMUNICATION TESTER	R&S	CMW500	1042699	15/03/2022	15/03/2023

2.3. Environmental conditions

See results sheets

3. RESULT

PRODUCT: Air Quality Station			
Brand:	Air Quality Station	Model:	Air Quality Station
S/N:	AQS20363639533150150040001C	Internal Id:	9104-00001
Class:	B		
TESTING		RESULTS	NOTES
Radio-frequency radiated emissions. (FCC Part 15.109, ICES-003 Issue 7 (3.2.2))		Pass	Note: 4
Power Line conducted emissions. (FCC Part 15.107, ICES-003 Issue 7 (3.2.1))		Pass	Note: 4
<p>The criteria to give conformity in those cases where it is not implicit in the standard or specification will be, for EMC emissions tests, a non-simple binary decision rule will be followed with a safety zone equal to the value of the uncertainty ($w = U$).</p> <p>In this case, the upper limit of the value of the probability of false acceptance, according to ILAC G8, is 2.5% and the criteria notes are:</p> <p>1: The measured results are above the upper limit, even considering the uncertainty interval. 2: The measured results are above the specified limits, but within the uncertainty interval. It is therefore not possible to state compliance based on the 95% level of confidence. However, the results indicate that non-compliance is more probable than compliance 3: The measured results are below the specified limits, but within the uncertainty interval. It is therefore not possible to state compliance based on the 95% level of confidence. However, the results indicate that compliance is more probable than non-compliance 4: The measured results are within the limits, including the uncertainty interval.</p>			

Service Quality Assurance

Applus+, guarantees that this work has been made in accordance with our Quality and Sustainability System, fulfilling the contractual conditions and legal norms.

Within our improvement program we would be grateful if you would send us any commentary that you consider opportune, to the person in charge who signs this document, or to the Quality Manager of Applus+, in the following e-mail address:

satisfaccion.cliente@applus.com

4. ANNEXES

4.1 Test Results

4.1.1 Radio-frequency radiated emissions

Test Procedures:

The test site, 3 or 10 m semi-anechoic chamber, has met the requirement of NSA tolerance 4 dB according to the standards: ANSI C63.4-2014

The radiated measurements are performed in vertical and horizontal plane in the frequency range from 30 MHz to 1 GHz in semi-anechoic chambers. The receiving antennas are conform to specifications ANSI C63. These antennas can be moved over the height range between 1.0 m and 4.0 m in order to search for maximum field strength emitted from EUT. The measurement distances between EUT and receiving antennas are indicated in the test setups for the various frequency ranges. For each measurement, the EUT is rotated in all three axes until the maximum field strength is received.

EMI Receiver configuration:

During the radiated emission test, the EMI receiver was set with the following configurations:

Frequency band (MHz)	Function	Resolution Bandwidth	Video Bandwidth
30 to 1000	QP	120 kHz	300 kHz
Above 1000	Peak	1 MHz	3 MHz
	Average	1 MHz	10 Hz

Pre-measurement

- The turntable rotates from 0° to 315° using 45° steps
- The antenna is polarized vertical and horizontal
- The antenna height changes from 1 m to 4 m
- At each turntable position, antenna polarization and height the receiver finds the maximum of all emissions

Final measurement

- The final measurement is performed for at least six highest peaks according to the requirements of the ANSI C63.4
- Based on antenna and turntable positions at which the peak values are measured the software maximize the peaks by changing turntable position 360 ° and antenna height between 1 and 4 m
- The final measurement is done with quasi-peak detector (as described in ANSI C63.4) for 30MHz to 1GHz emissions test
- The final measurement is done in the position (azimuth, height and antenna polarization) causing the highest emissions with Peak and RMS detector (as described in ANSI C63.4) for 1GHz to 18GHz test
- Final levels, frequency, measuring time, bandwidth, antenna height, antenna polarization, turntable angle, correction factors, margin to the limit and limit are recorded. A plot with the graph of the premeasurement with marked maximum final results and the limit is shown

Correction Factor:

Emission Level = Read Level + Corrections (Ant.Factor + Cable Loss – Ampli.Gain (if applies) + Attenuator (if applies))

Limits:

According to FCC Part 15.109:

- Limits of Radiated Emission Measurement (Below 1000 MHz)

Frequency (MHz)	Class B (dB μ V/m) (at 3 m)
	QuasiPeak
30 – 88	40
88 – 216	43.5
216 – 960	46
960 – 1000	54

Frequency (MHz)	Class A (dB μ V/m) (at 10 m)
	QuasiPeak
30 – 88	39
88 – 216	43.5
216 – 960	46.4
960 – 1000	49.5

- Limits of Radiated Emission Measurement (Above 1000 MHz)

Frequency (MHz)	Class B (dB μ V/m) (at 3 m)	
	Peak	Average
Above 1000	74	54

Frequency (MHz)	Class A (dB μ V/m) (at 10 m)	
	Peak	Average
Above 1000	69.5	49.5

According to ICES-003 Issue 7 (3.2.2):

- Limits of Radiated Emission Measurement (Below 1000 MHz)

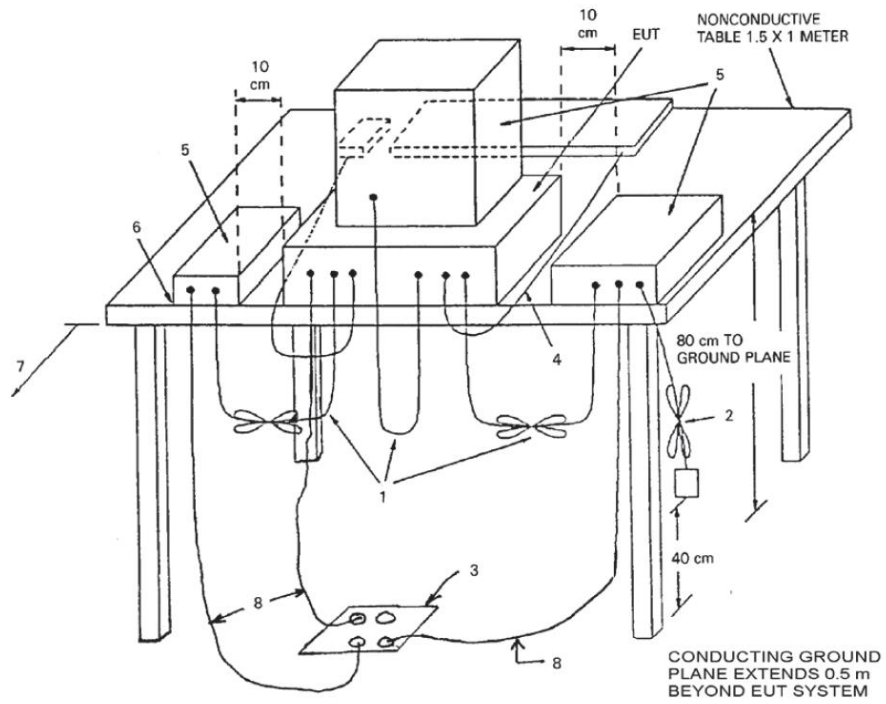
Frequency range (MHz)	Class A (3 m) Quasi-peak (dB μ V/m)	Class A (10 m) Quasi-peak (dB μ V/m)	Class B (3 m) Quasi-peak (dB μ V/m)	Class B (10 m) Quasi-peak (dB μ V/m)
30 – 88	50.0	40.0	40.0	30.0
88 – 216	54.0	43.5	43.5	33.1
216 – 230	56.9	46.4	46.0	35.6
230 – 960	57.0	47.0	47.0	37.0
960 – 1000	60.0	49.5	54.0	43.5

- Limits of Radiated Emission Measurement (Above 1000 MHz)

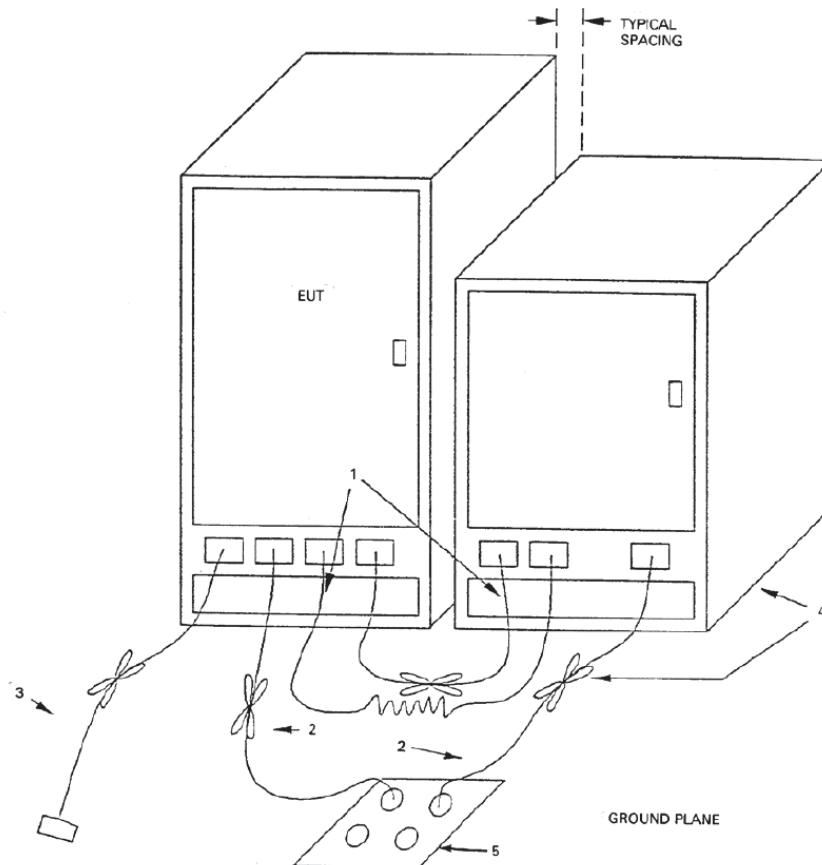
Frequency range (GHz)	Class A (3 m) Average dB(μ V/m)	Class A (3 m) Peak dB(μ V/m)	Class B (3 m) Average dB(μ V/m)	Class B (3 m) Peak dB(μ V/m)
1 – 13.5	60	80	54	74

If using a different measurement distance, the measured levels shall be extrapolated using a factor of 20 dB per decade of distance. The measurement distance shall place the measurement antenna in the far field of the ITE or digital apparatus under test.

Test Setup (depending on the EUT arrangement):



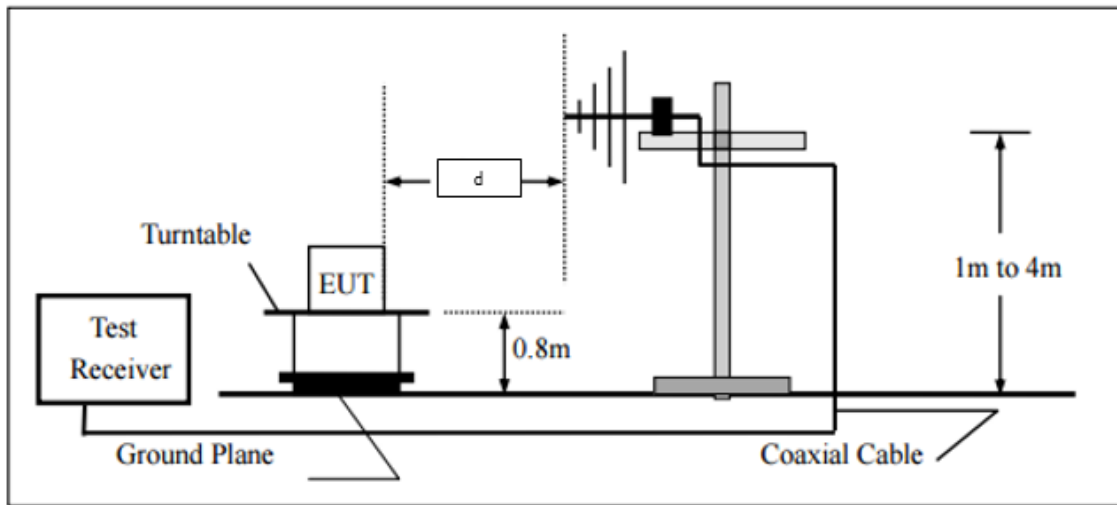
Radio-frequency radiated emissions of tabletop equipment.



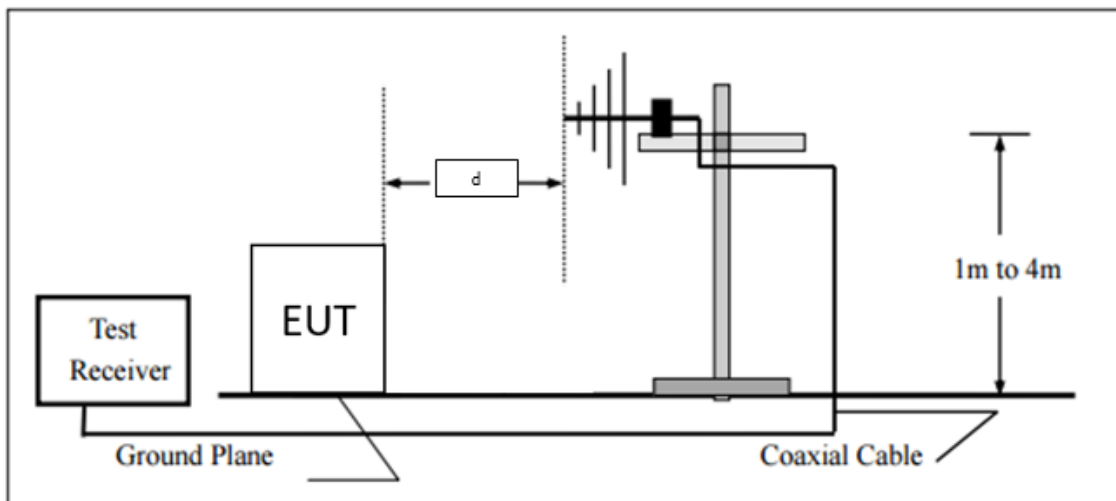
Radio-frequency radiated emissions of floor-standing equipment.

Test Configuration (depending on the EUT arrangement):

- **For radiated emissions from 30 MHz to 1000 MHz:**



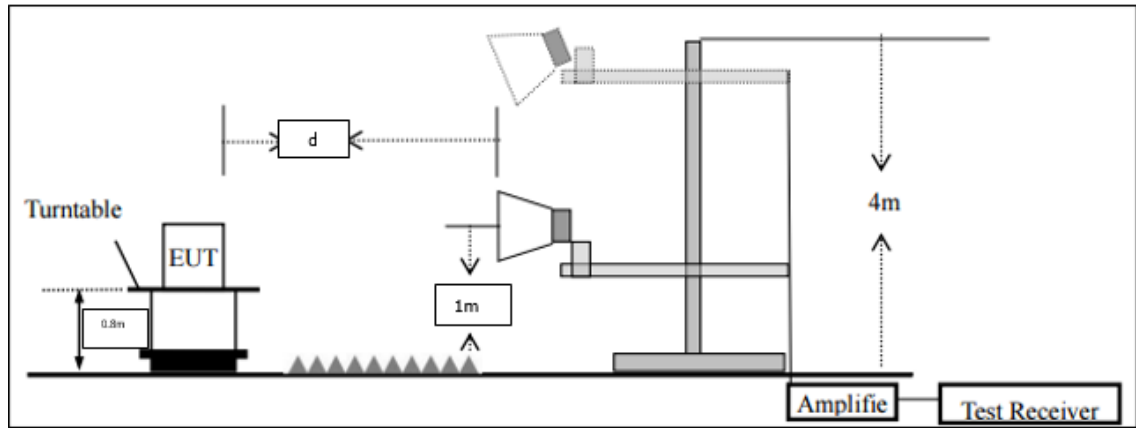
Radio-frequency radiated emissions of tabletop equipment.



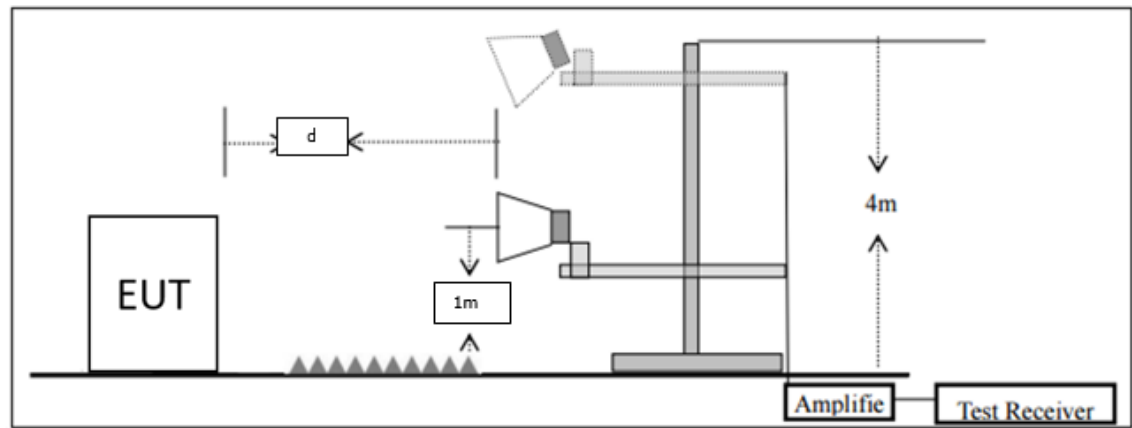
Radio-frequency radiated emissions of floor-standing equipment.

Distance "d" depends on test chamber.

- For radiated emissions above 1000 MHz:



Radio-frequency radiated emissions of tabletop equipment.



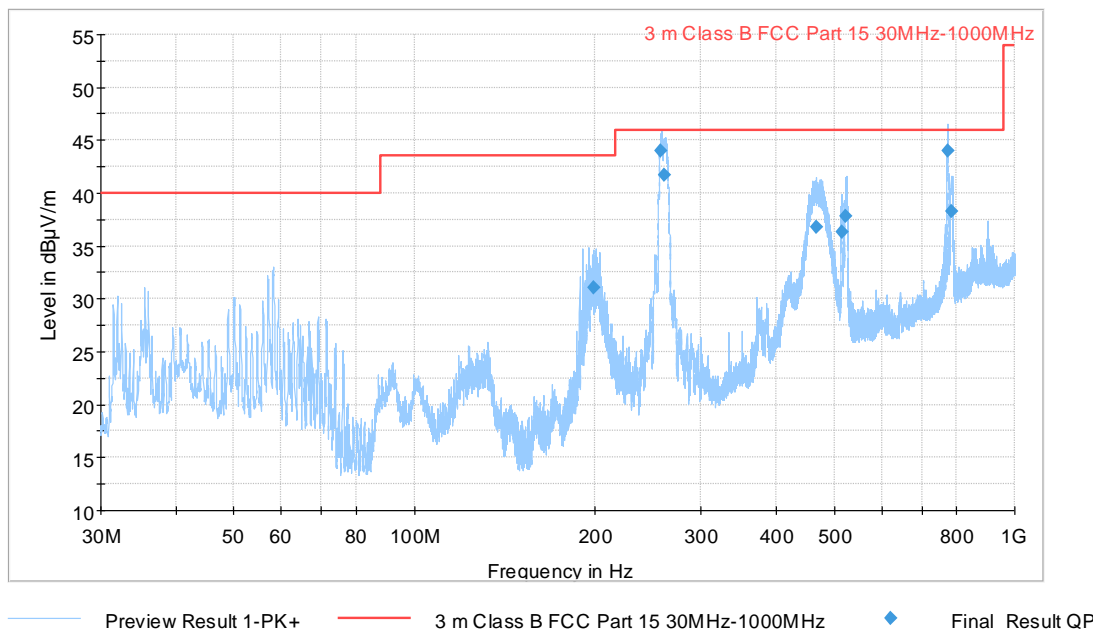
Radio-frequency radiated emissions of floor-standing equipment.

Distance "d" depends on test chamber.

RADIO-FREQUENCY RADIATED EMISSIONS														
Technician: Adrián Duque / Leonardo Tolve			Frequency range: 30 MHz – 13.5 GHz											
Test date: 2022-08-16														
Basic standard: ANSI C63.4:2014														
<table border="1" style="width: 100%;"> <tr> <td>Temperature:</td> <td>22.8</td> <td>°C</td> </tr> <tr> <td>Humidity:</td> <td>70.9</td> <td>%</td> </tr> <tr> <td>Atm. Pressure:</td> <td>991.2</td> <td>hPa</td> </tr> </table>						Temperature:	22.8	°C	Humidity:	70.9	%	Atm. Pressure:	991.2	hPa
Temperature:	22.8	°C												
Humidity:	70.9	%												
Atm. Pressure:	991.2	hPa												
EUT:	Class	Test Area	Distance	PreScan	Evaluation									
Tabletop	B	SAC2	3 m (30 MHz – 1 GHz)	8 faces (45° step)	Individual									
RESULTS: Pass														
Identification	Emissions	Main emission source and type												
DUT: Device under test BB: Broadband NB: Narrowband SPU: Spurs QP: Quasi-peak U: Uncertainty	QP < Limit - U	DUT, BB												
Comments														
Pre-Scan has been performed to determinate the worst-case mode between B1, B3 and B20.														

RADIO-FREQUENCY RADIATED EMISSIONS (below 1 GHz)

PRESCAN 30 MHz – 1 GHz
LTE Band 3 (downlink 1842.5 MHz / uplink 1747.5 MHz)



FINAL MEASUREMENTS

Frequency (MHz)	QuasiPeak (dBµV/m)	Limit (dBµV/m)	Margin (dB)	Height (cm)	Pol	Azimuth (deg)	Corr. (dB/m)
198.8100	31.05	43.50	12.45	151.0	H	203.0	16.4
257.4900	43.96	46.00	2.04	118.0	H	163.0	18.1
260.8500	41.72	46.00	4.28	129.0	H	147.0	18.1
467.2200	36.75	46.00	9.25	111.0	V	72.0	22.5
515.2800	36.34	46.00	9.66	108.0	V	170.0	23.4
523.2600	37.81	46.00	8.19	100.0	V	174.0	23.5
772.9800	44.03	46.00	1.97	178.0	H	133.0	27.8
784.5900	38.28	46.00	7.72	250.0	H	175.0	28.0

Comments:

Emission Level = Read Level + Corrections (Ant.Factor + Cable Loss + Attenuator)

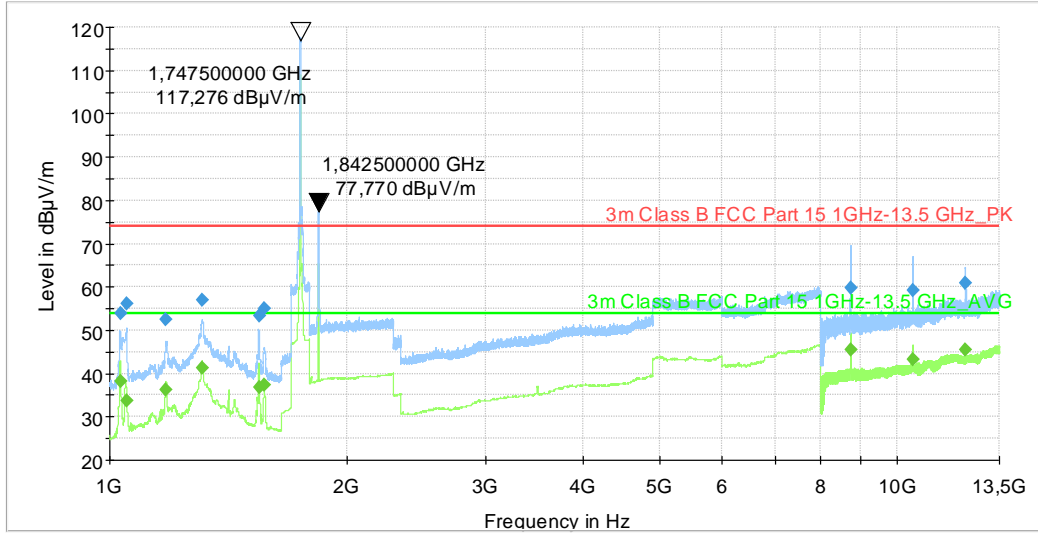
Note: radiated emissions from 30 MHz to 1 GHz has been done at 3 meters of distance from EUT to antenna. The limits has been modified according to the standard using the following formula: $L_2 = L_1 + 20\log(d_1/d_2)$, where:

- L₂: New limit
- L₁: Limit at 10 meters
- d₁: 10 meters (standard distance)
- d₂: 3 meters (new measurement distance)

RADIO-FREQUENCY RADIATED EMISSIONS (above 1 GHz)

PRESCAN 1 GHz – 13.5 GHz

LTE Band 3 (downlink 1842.5 MHz / uplink 1747.5 MHz)



- Preview Result 2-AVG
- 3m Class B FCC Part 15 1 GHz-13.5 GHz_PK
- ◆ Final_Result PK+
- Preview Result 1-PK+
- 3m Class B FCC Part 15 1 GHz-13.5 GHz_AVG
- ◆ Final_Result AVG

FINAL MEASUREMENTS

Frequency (MHz)	MaxPeak (dBµV/m)	Limit (dBµV/m)	Margin (dB)	Average (dBµV/m)	Limit (dBµV/m)	Margin (dB)	Height (cm)	Pol	Azimuth (deg)	Corr. (dB)
1030.750	53.95	74.00	20.05	38.30	54.00	15.70	100.0	V	110.0	25.8
1050.750	56.00	74.00	18.00	33.85	54.00	20.15	108.0	V	132.0	25.9
1179.750	52.49	74.00	21.51	36.14	54.00	17.86	105.0	H	171.0	26.6
1310.500	56.96	74.00	17.04	41.15	54.00	12.85	177.0	H	170.0	26.9
1547.000	53.43	74.00	20.57	36.78	54.00	17.22	305.0	H	180.0	27.4
1570.750	54.89	74.00	19.11	37.31	54.00	16.69	321.0	V	108.0	27.4
8736.750	59.65	74.00	14.35	45.40	54.00	8.60	270.0	H	171.0	40.0
10483.50	59.11	74.00	14.89	43.15	54.00	10.85	275.0	H	163.0	40.7
12230.50	60.88	74.00	13.12	45.50	54.00	8.50	274.0	H	168.0	41.9

Comments:

Emission Level = Read Level + Corrections (Ant.Factor + Cable Loss – Ampli.Gain + Attenuator)

4.1.2 Power Line Conducted Emissions

Test Procedure:

The device under test is arranged in table-top or floor-standing position depending on the kind of equipment and keeping the distance from the vertical or horizontal conducting plane located 40 cm to the rear or below of the device, in respective on the test chamber which is evaluated.

The device is connected to line impedance stabilization network (LISN), placed 80 cm far from the device under test and other accessories are connected to other LISN too. Measured levels of AC power line conducted emission are across the 50 Ω LISN port.

AC conducted emission measurements are made over frequency range from 150 kHz to 30 MHz.

EMI Receiver configuration:

During the conducted emission test, the EMI receiver was set with the following configurations:

Frequency band (MHz)	Function	Resolution Bandwidth
0.150 - 30	Peak	9kHz
	Average	9kHz

Pre-measurement:

- Pre-scan measurement using a peak and average detector is performed in order to show the emissions of the device under test
- Each line of the power cord is evaluated to find the maximum emissions

Final measurement:

- The final measurement is performed for at least six highest peaks according to the requirements of the ANSI C63.4
- The final measurement is done with quasi-peak and average detector (as described in ANSI C63.4)
- Final levels, frequency, measuring time, bandwidth, correction factors, margin to the limit and limit are recorded. A plot with the graph of the premeasurement with marked maximum final results and the limit is shown

Correction Factor:

Emission Level = Read Level + Corrections (LISN factor + Cable Loss + Attenuator)

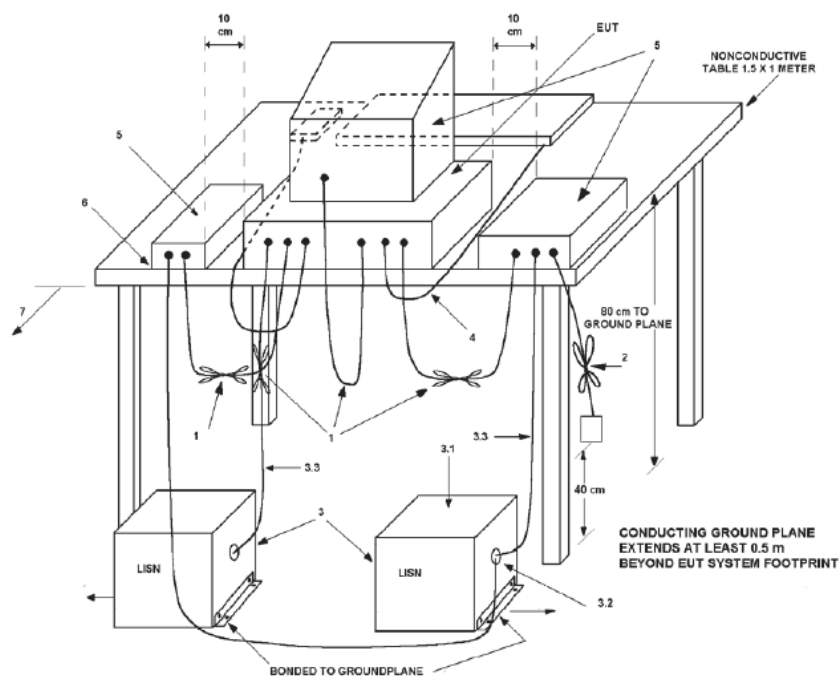
Limits:

Frequency of emission (MHz)	Class B - Conducted limit (dB μ V)	
	Quasi-peak	Average
0.15 – 0.5	66 to 56*	56 to 46*
0.5 – 5	56	46
5 – 30	60	50

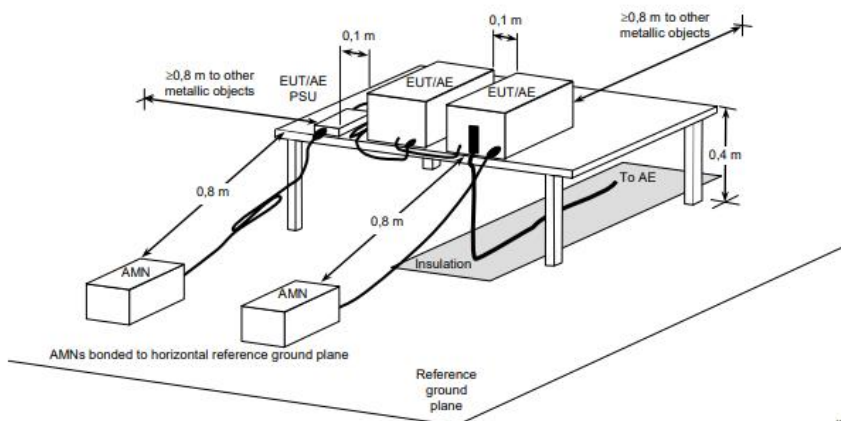
*Decreases with the logarithm of the frequency.

Frequency of emission (MHz)	Class A - Conducted limit (dB μ V)	
	Quasi-peak	Average
0.15 – 0.5	79	66
0.5 – 30	73	60

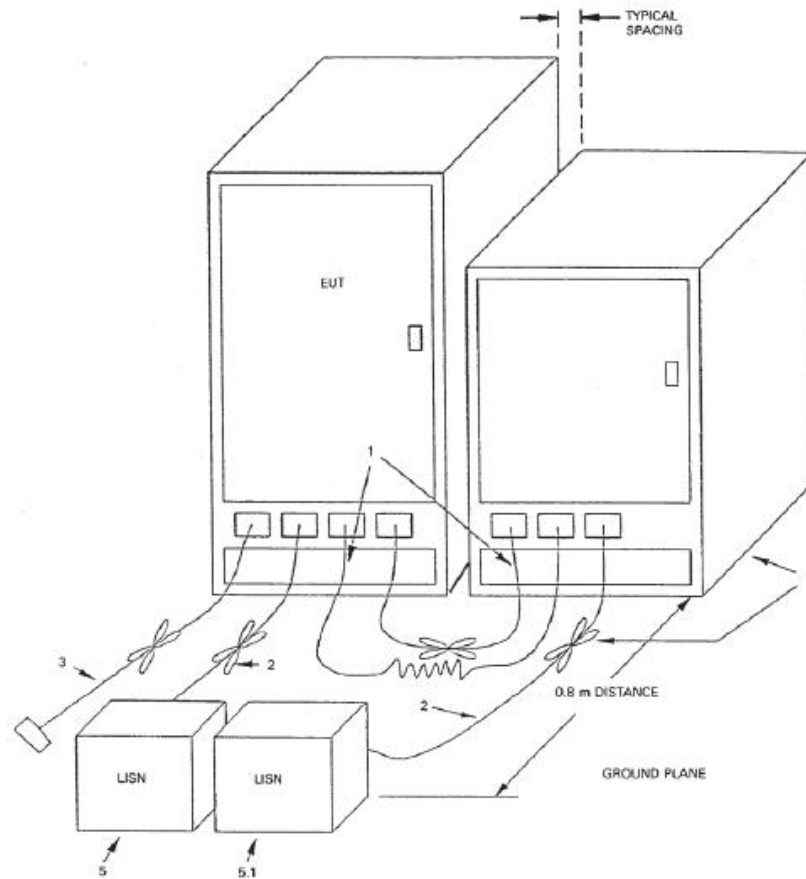
Test Setup (depending on the EUT arrangement and test chamber):



Power line conducted emissions of tabletop equipment in Shielded Room

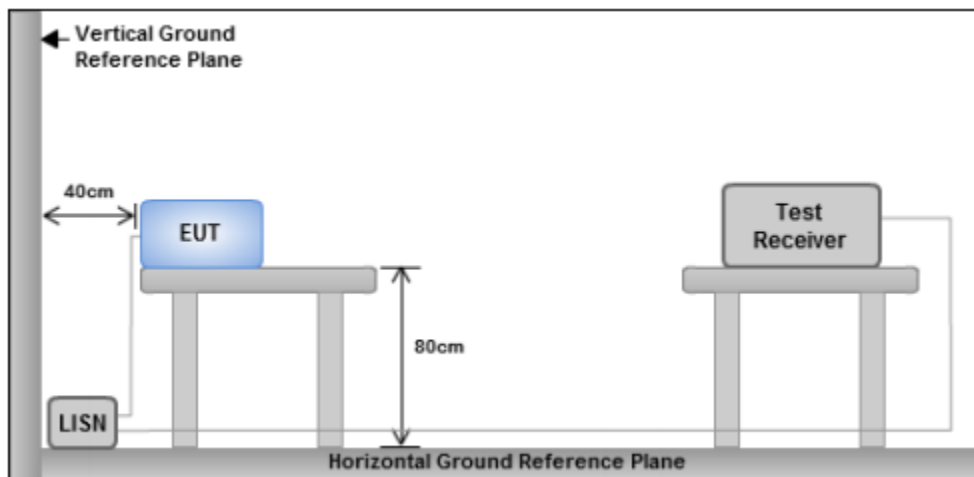


Power line conducted emissions of tabletop equipment in Semi anechoic Room

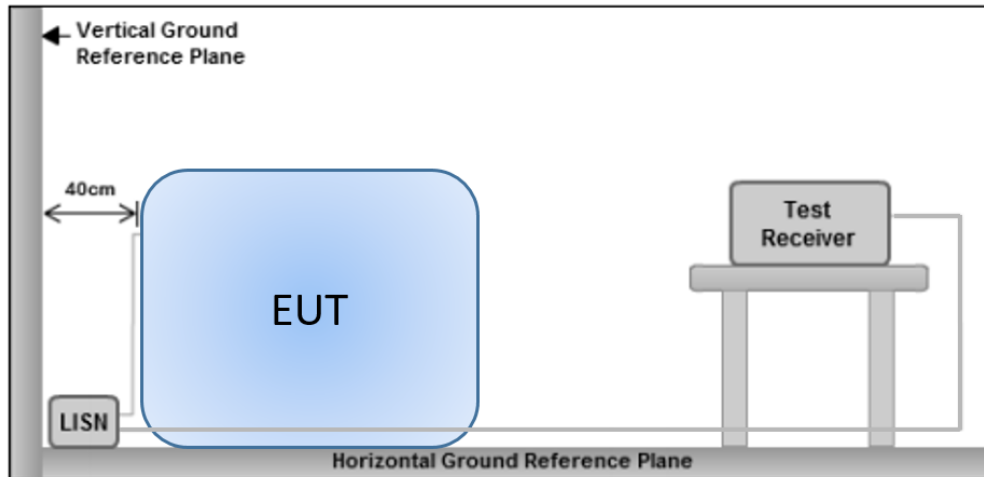


Power line Conducted emissions of floor-standing equipment

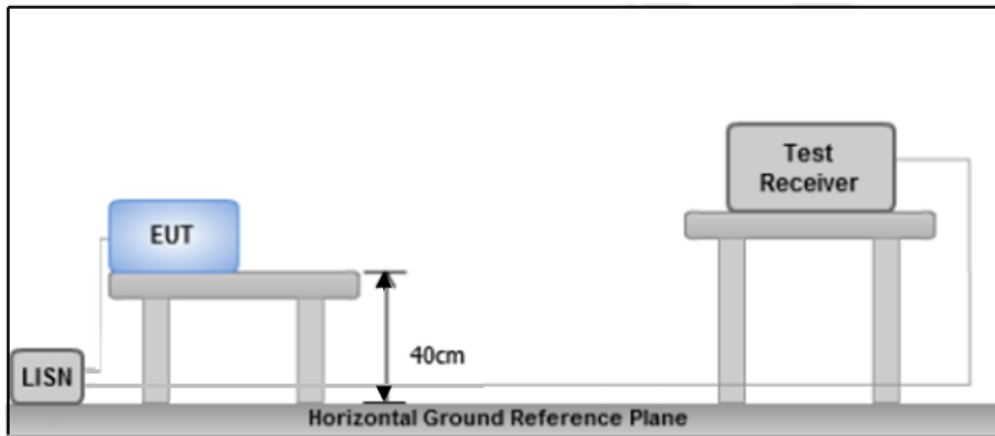
Test Configuration (depending on the EUT arrangement and test chamber):



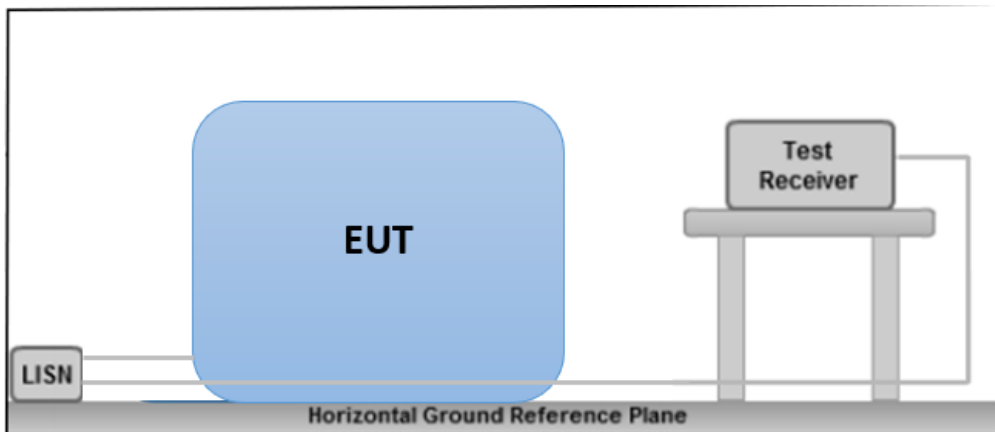
Power line conducted emissions of tabletop equipment in Shielded Room



Power line conducted emissions of floor-standing equipment in Shielded Room



Power line conducted emissions of tabletop equipment in in Semi anechoic Room

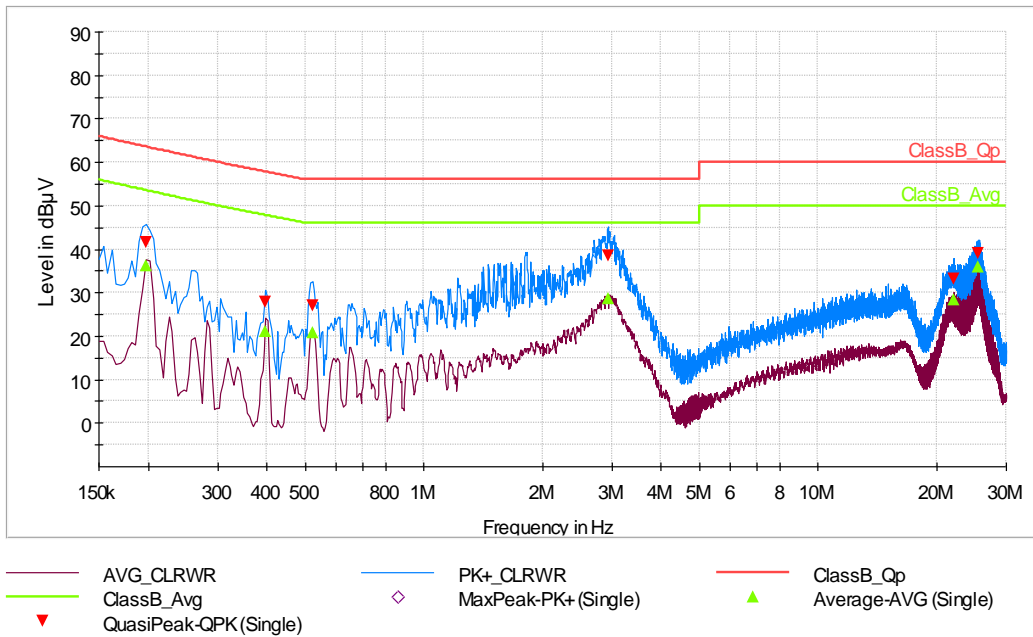


Power line conducted emissions of floor-standing equipment in in Semi anechoic Room

POWER LINE CONDUCTED EMISSIONS											
Technician: Adrián Duque		Frequency range: 150 kHz – 30 MHz									
Test date: 2022-08-18											
Basic standard: ANSI C63.4:2014											
<table border="1" style="width: 100%;"> <tr> <td>Temperature:</td> <td>21.2</td> <td>°C</td> </tr> <tr> <td>Humidity:</td> <td>45.5</td> <td>%</td> </tr> <tr> <td>Atm. Pressure:</td> <td>995.2</td> <td>hPa</td> </tr> </table>			Temperature:	21.2	°C	Humidity:	45.5	%	Atm. Pressure:	995.2	hPa
Temperature:	21.2	°C									
Humidity:	45.5	%									
Atm. Pressure:	995.2	hPa									
EUT:	Class	Test Area									
Tabletop	B	SR-2									
RESULTS: Pass											
Identification	Emissions	Main emission source and type									
DUT: Device under test BB: Broadband NB: Narrowband SPU: Spurs QP: Quasi-peak U: Uncertainty	QP < Limit - U	DUT, BB									
Comments											
The worst case obtained from Radiated emission test is used to measure the power line conducted emissions.											

POWER LINE CONDUCTED EMISSIONS

LINE N (LTE Band 3 downlink 1842.5 MHz / uplink 1747.5 MHz)



FINAL MEASUREMENTS

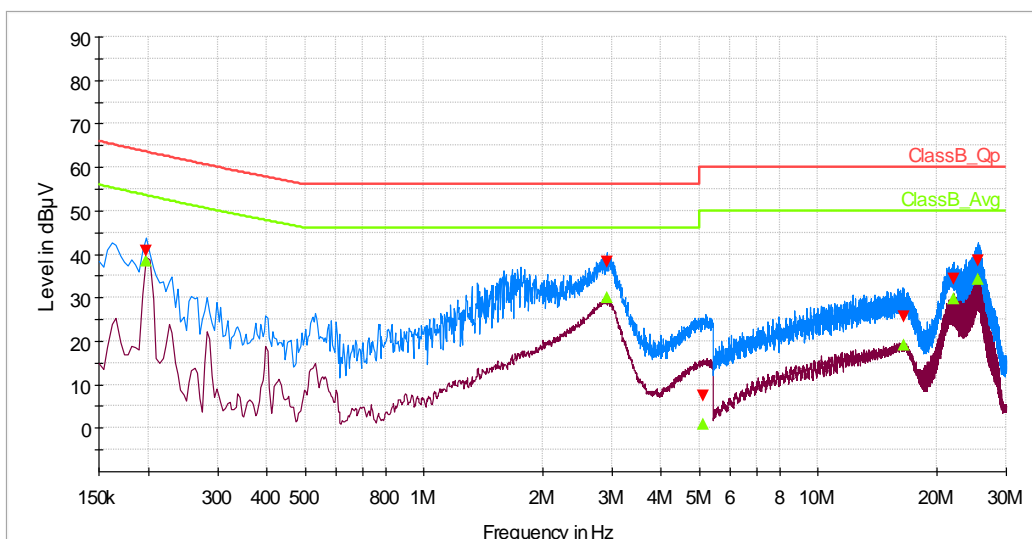
Frequency (MHz)	QuasiPeak (dBµV)	Margin - QPK (dB)	Limit - QPK (dBµV)	Average (dBµV)	Margin - AVG (dB)	Limit - AVG (dBµV)	Line	Corr. (dB)
0.198000	41.6	22.0	63.5	36.1	17.4	53.5	N	10.6
0.398000	27.8	30.0	57.8	21.1	26.7	47.7	N	10.7
0.522000	26.9	29.1	56.0	20.9	25.2	46.0	N	10.7
2.934000	38.4	17.6	56.0	28.7	17.3	46.0	N	10.8
22.158000	33.3	26.8	60.0	28.4	21.6	50.0	N	12.1
25.442000	39.1	20.9	60.0	36.0	14.0	50.0	N	12.3

Comments:

Emission Level = Read Level + Corrections (LISN factor + Cable Loss + Attenuator)

POWER LINE CONDUCTED EMISSIONS

LINE L (LTE Band 3 downlink 1842.5 MHz / uplink 1747.5 MHz)



- AVG_CLRWR
- PK+_CLRWR
- ClassB_Qp
- ClassB_Avg
- ◇ MaxPeak-PK+ (Single)
- ▲ Average-AVG (Single)
- ▼ QuasiPeak-QPK (Single)

FINAL MEASUREMENTS

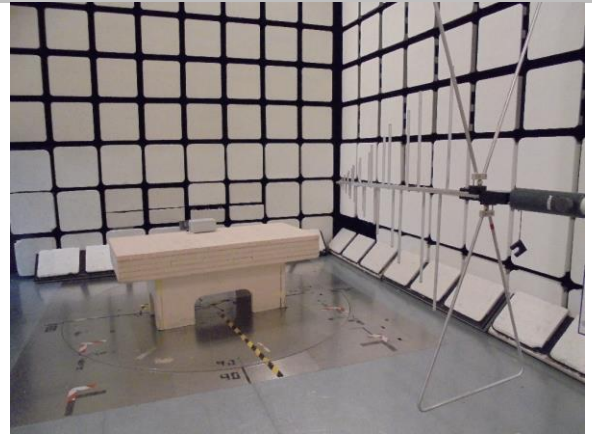
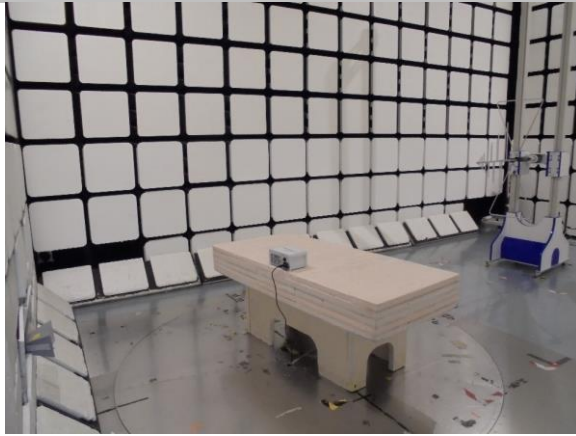
Frequency (MHz)	QuasiPeak (dBµV)	Margin - QPK (dB)	Limit - QPK (dBµV)	Average (dBµV)	Margin - AVG (dB)	Limit - AVG (dBµV)	Line	Corr. (dB)
0.198000	40.7	22.8	63.5	38.5	15.1	53.5	L1	10.6
2.910000	38.1	17.9	56.0	30.0	16.0	46.0	L1	10.9
5.134000	7.5	52.5	60.0	0.8	49.2	50.0	L1	11.0
16.538000	25.5	34.6	60.0	19.0	31.0	50.0	L1	12.1
22.158000	34.3	25.8	60.0	29.7	20.3	50.0	L1	12.5
25.494000	38.6	21.4	60.0	34.4	15.6	50.0	L1	12.7

Comments:

Emission Level = Read Level + Corrections (LISN factor + Cable Loss + Attenuator)

4.2. Test Setup Configuration

From file number: 22/36404875



Radio-frequency radiated emissions 30 MHz to 1 GHz



Radio-frequency radiated emissions 1 GHz to 13.5 GHz



Power Line conducted emissions

4.3. Identification pictures

From file number: **22/36404875**



General view



Front view



Label view

Applus⁺
laboratories

ID Submuestra: **9104-00001**

Nombre: AIR QUALITY STATION LTE

Ciente: LIBELIUM COMUNICACIONES

Oferta/Expediente: DV-220308412E-1

Fecha Recepción: 22-08-2022 **Fecha Ensayo:**

Material: INDUSTRIA

Internal Identifier label



Auxiliary equipment

End of document